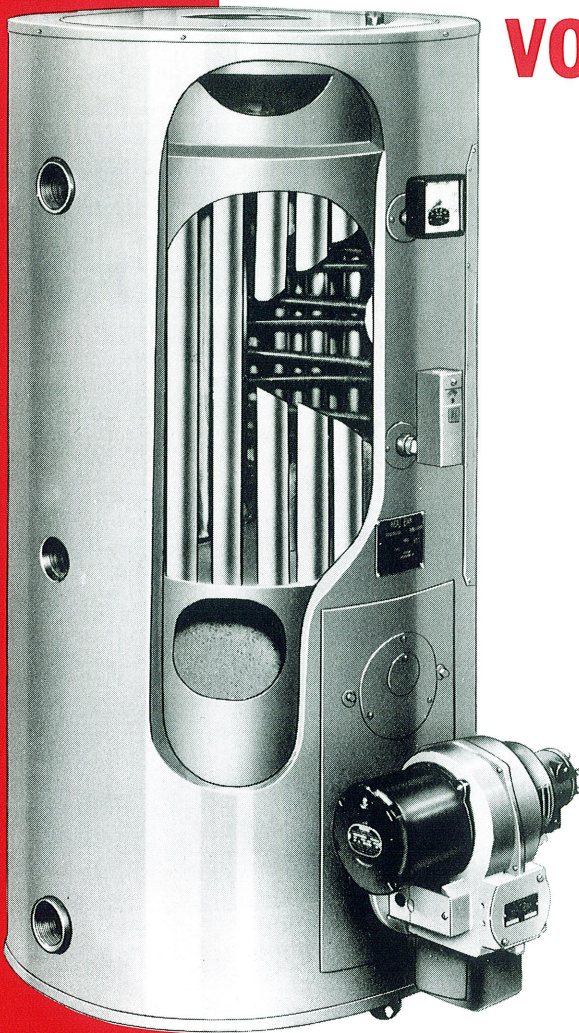


ALDRICH

SUBMERGED COPPER COIL VOLUME WATER HEATERS

—Oil Fired



SERIES WHO
INDIRECT FIRED

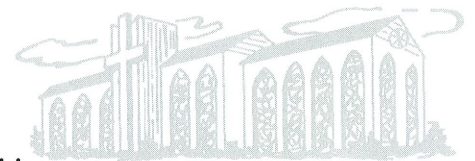


...HOTELS and MOTELS

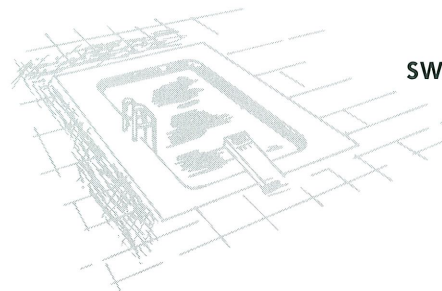
SCHOOLS and
INSTITUTIONS. . .



CHURCHES
RESTAURANTS
FACTORIES
LAUNDROMATS. . .



SWIMMING POOLS
DORMITORIES
AND. . .



Wherever large quantities of hot water are required



ASME

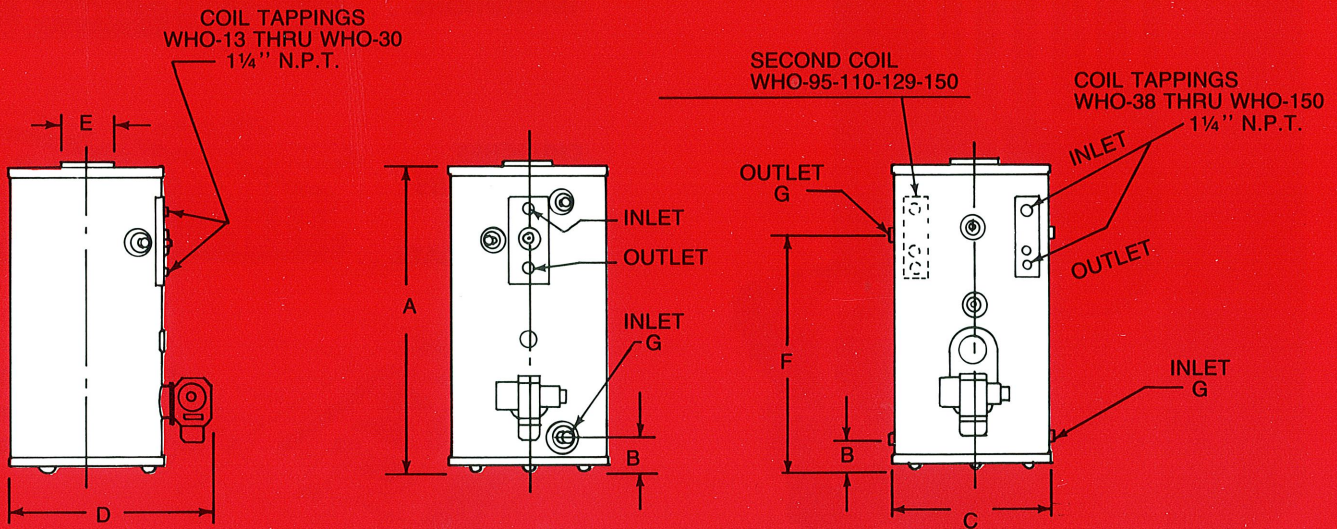
OIL FIRED • 135 GPH to 1500 GPH

ALDRICH COMPANY, WYOMING, ILLINOIS

SIZES and SPECIFICATIONS

Model Number	WATER HEATING CAPACITIES—G.P.H.				Firing Rate G.P.H.	Working Pressure P.S.I.	Shipping Weight Lbs.
	40°—140°	40°—180°	60°—140°	60°—180°			
WHO-13-ID	135	96	169	113	1.1	30	458
WHO-17-ID	170	121	213	142	1.35	30	525
WHO-21-ID	216	154	270	180	1.65	30	537
WHO-23-ID	235	168	294	196	2.0	30	640
WHO-30-ID	300	214	375	250	2.5	30	675
WHO-38-ID	385	275	481	321	3.0	30	1331
WHO-47-ID	475	340	594	396	4.0	30	1350
WHO-56-ID	560	400	700	467	4.5	30	1475
WHO-64-ID	645	460	806	538	5.0	30	1591
WHO-77-ID	775	554	969	646	6.0	30	1802
WHO-95-ID	950	680	1188	792	7.5	30	2116
WHO-110-ID	1125	785	1375	915	9.0	30	2302
WHO-129-ID	1296	925	1620	1080	10.0	30	2676
WHO-150-ID	1500	1070	1875	1250	12.5	30	3062

Equipment furnished includes fully erected water heater, pressure type oil burner, primary control, limit control, Thermlimeter, and ASME pressure relief valve. Burner and controls packed in separate carton. Models WHO-13 through WHO-30 furnished with high pressure induced draft burner. All others with high speed mechanical forced draft burners. Proper sized expansion tank must be included with installations.



	WHO 13	WHO 17	WHO 21	WHO 23	WHO 30	WHO 38	WHO 47	WHO 56	WHO 64	WHO 77	WHO 95	WHO 110	WHO 129	WHO 150
A	38 ⁷ / ₈	42 ¹ / ₈	42 ¹ / ₈	45 ⁷ / ₈	47 ³ / ₈	61 ¹ / ₂	61 ¹ / ₂	66	67 ¹ / ₂	68	69 ¹ / ₂	73 ¹ / ₂	73 ¹ / ₂	73 ¹ / ₂
B	5	5	5	5	5	6	6	6	6	6	6	6	6	6
C	20	22	22	25	25	29 ⁵ / ₈	30 ⁵ / ₈	32 ¹ / ₈	34 ¹ / ₄	37 ³ / ₄	40 ³ / ₄	40 ³ / ₄	45 ³ / ₈	47
D	30	32	32	35	35	39 ¹ / ₄	40 ¹ / ₄	47	49 ¹ / ₄	52 ³ / ₄	58	58	62 ¹ / ₂	64
E	6	7	7	8	8	9	9	9	9	10	10	12	12	12
F	TOP OUTLET					51 ⁷ / ₈	51 ⁷ / ₈	55 ¹ / ₄	55 ¹ / ₄	55 ¹ / ₄	55 ¹ / ₄	60	60	60
G	1 ¹ / ₂	1 ¹ / ₂	1 ¹ / ₂	1 ¹ / ₂	1 ¹ / ₂	2	2	2	2	2	2	2	2	2